

MAGNA.
NATURSTEIN





**Our Glaskeramik is sustainable –
thanks to 100% recycled glass.
Handmade in Germany.**



x 8

= 1 m² Glaskeramik





OUR PRODUCTION PROCESS

Magna Glaskeramik is a material of crystalline structure, translucent and with lighting capabilities. Its patinated, natural surface has an extraordinary textured finish.

Magna Glaskeramiks **production process** is unique and displays a fascinating combination of high tech manufacturing and sustainable material sourcing. Glaskeramik is made 100% from the waste in making German glass production. In this way the industrial waste of glass bottle and solar glass production is prepared into particular **shards and granulate** form. These thousands of

shards are sorted and then sintered under a patented computer-controlled programme.

Thereby the unusual character of the glass comes out of it becoming from part crystal, **without force of pressure or additives**, only using temperature and time controls.

Finally an extremely precise **cooling programme** reduces the tension in the material to a minimum such that it is annealed and not toughened, a character more like stone than safety glass.

OUR COLOURS

All colours are available in patinated, polished and matt surface



Raindrop Clear



Polar White



Jade Green



Ice Nugget



Stormy Grey

All colours are in **stock sheets**

2800 x 1250 mm patinated | polished* | matt*

3500 x 1500 mm patinated | polished* | matt*

*Polished or matt finishes have smaller sizes,
e.g. 2700 x 1200 mm or 3400 x 1400 mm.

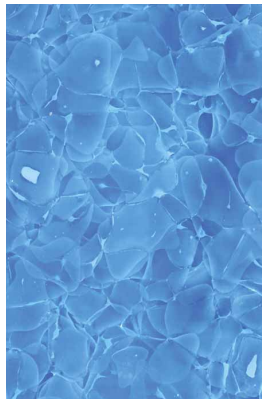
Thickness: 20 mm Standard | 16+30 mm Special



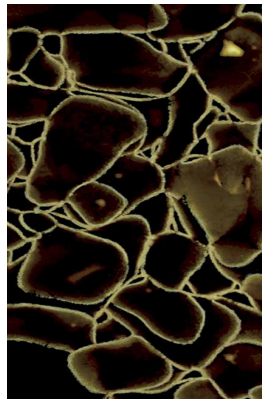
Sky Blue



Forest Green




Ocean Blue



Champagne
Brown



Pearl Black



© Lavisio
Ocean Blue polished



© Tala
Polar White polished



Küche © RBS Elektroinstallation GmbH
Pearl Black polished



Glaskeramik-Neolith-Showroom Düsseldorf
Pearl Black pure



© Baas Fliesenfachgeschäft
Jade Green polished



Design: NAARO
Polar White polished

OUR OBJECTS

Glaskeramik – a fascinating material for interior architecture which offers a wide spectrum of application possibilities; in bathrooms, kitchens, shops and expositions, vanities, sinks, shower screens, kitchen worktops and splashbacks, floor slabs, window reveals, shelving, receptions, desks and column cladding, sun screens and office dividers.

Aside from this Glaskeramik is an exciting solution for the furniture and design arenas. The material can be used as a unique room divider, interior wall cladding and even as large format external façade. Here the play of light, half reflection and translucency of the surface is especially exciting and new.

Also the material combines and contrasts well with other materials, especially glass and stone.



© Fliesen Götting
Ice Nugget polished

Design: GENTE
Polar White polished





Sport-Arena Leipzig
Polar White pure, Photo: Marcus Bleyl



Pharmacy
Polar White polished, backlit



Restaurant GOUD, Rotterdam | realization: Michel Opreij & Bejsterveld
Forest Green polished



Discothek STAR, design+realization: popup bau, Herford
Ocean Blue pure, backlit, Photo: Martin Stöver



GORALSKA

JOAILLERIE

PARIS LUXEMBOURG Gstaad

WWW.GORALSKA.COM

Goralska
Polar White pure, backlit




Brewery Warszawskie, Warschau
Special Green polished, Architects: JEMS



Infobox St. Sebalduskirche, Nürnberg
Jade Green pure, Photo: Marcus Bleyl



MEHR WERT.PAVILLON, Buga Heilbronn
Photo: MWP | 2hs | credit Felix Heisel



Elbow Table Set Magna Chrome by Caussa
Ocean Blue polished, Design: Andreas Kowa-



MAGNA
GLASKERAMIK

font

Sebastian
Herkner

MADE IN
GERMANY

FONT by PULPO
Champagne Brown polished
Design: Sebastian Herkner



Leuchten
Design: TALA®

ne & Skills
neolith
hel Oprey
&
sterveld
an Reek
natuursteen
e Company
Jansen
ior Design
ulti Light
lektra



Piano, Masters of LXRY, Pearl Black polished
Stone & Skills | Jan Reek natuursteen | Design: Sandra Jansen



Cannon Place Station, London
Polar White pure, backlit



GLA Chukyo Hall, Prayer Hall, Nagoya, Japan
Polar White pure, Photo: Shigeo Ogawa



DM Market Schondorf; architects: Rossa & Partner
Polar White | Forest Green pure, backlit



Fraunhofer Institut IPA, Stuttgart,
Architects: Gewers Pudewill
Polar White pure



Museum Folkwang, Essen, architect: David Chipperfield
Jade Green pure, Photo: Christian Richters



Museum Bauhaus, Weimar
Photo: Andrew D. Alberts
Stripes: Polar White pure,
backlit




Talbot Gateway, Blackpool
Polar White pure



PRQA
Elevasjonsregning
Overvåking
Profil
Kartlegging
Asseco
Elev
Helse
Elevasjonsregning
Møtehuset

Mixed use building Trondheim, Norway
Jade Green pure, Photo: Henrik Larsen

A close-up photograph of a hand pointing at a white ceramic tile. The tile has a marbled pattern with various shades of grey, blue, and green. The hand is in the foreground, and the tile is in the background.

MAGNA. Glaskeramik
Straße der Einheit 18
D - 06179 Teutschenthal
T. +49 346 01 - 397 00

info@magna-glaskeramik.com
www.magna-glaskeramik.com